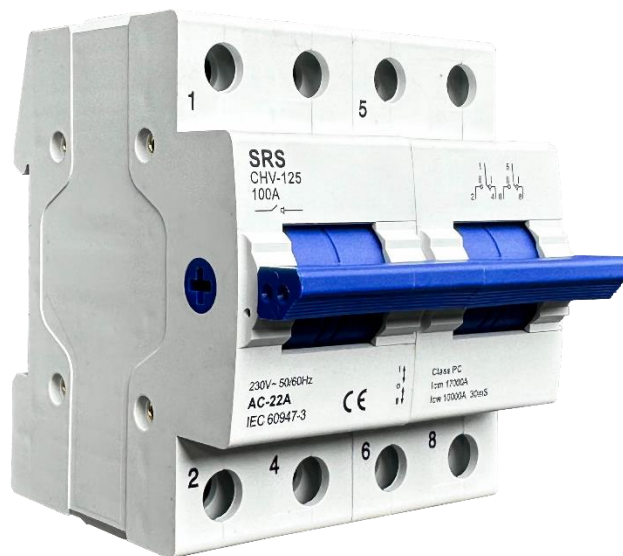


SRS CHV-125 MANUAL CHANGEOVER SWITCH 2P 100A

The **SRS CHV-125 Manual change over switch** has four functions: of-on-off, conversion and isolation. It can be freely switched on and off between two loads carried by a group of lines, or on two power sources. It is used for on-off and switching between, using DIN standard rail installation, the shell is made of PA66 injection molding, with high flame retardant performance, it is an ideal product that needs to be used for switching and opening and closing in industrial equipment and circuits. The rated current of this product is 100A, and it is convenient and safe to install and wire on the guide rail.



Technical Parameters

| | |
|---------------------|------------------------|
| Model NO. | SRS CHV-125 |
| Current | 100A |
| Voltage | 230V |
| Wiring | I-O-II |
| Terminal/Cable Size | 16-35mm ² |
| Output Type | Multiple |
| Working Temperature | -20~50 Degrees |
| Frequency | 50/60Hz |
| Function | On-off-on |
| Protection level | IP65 |
| Compliance | IEC-60947-3 |
| ICM | 17KA |
| ICW | 10KA |
| Class | PC |
| Number of poles | 2 |
| Mounting | DIN rail EN60715(35mm) |

Product Size

